

# Getting started with RTLinux Workbench 1.0 Live/Install DVD

---

## Minimum system requirement

- Pentium 4 or higher X86/X86\_64 Bit based computer/Laptop.
- Minimum 256MB RAM are required.
- 512MB RAM are recommended for better performance.
- DVD Reader/Writer.
- Operating Systems NOT required.

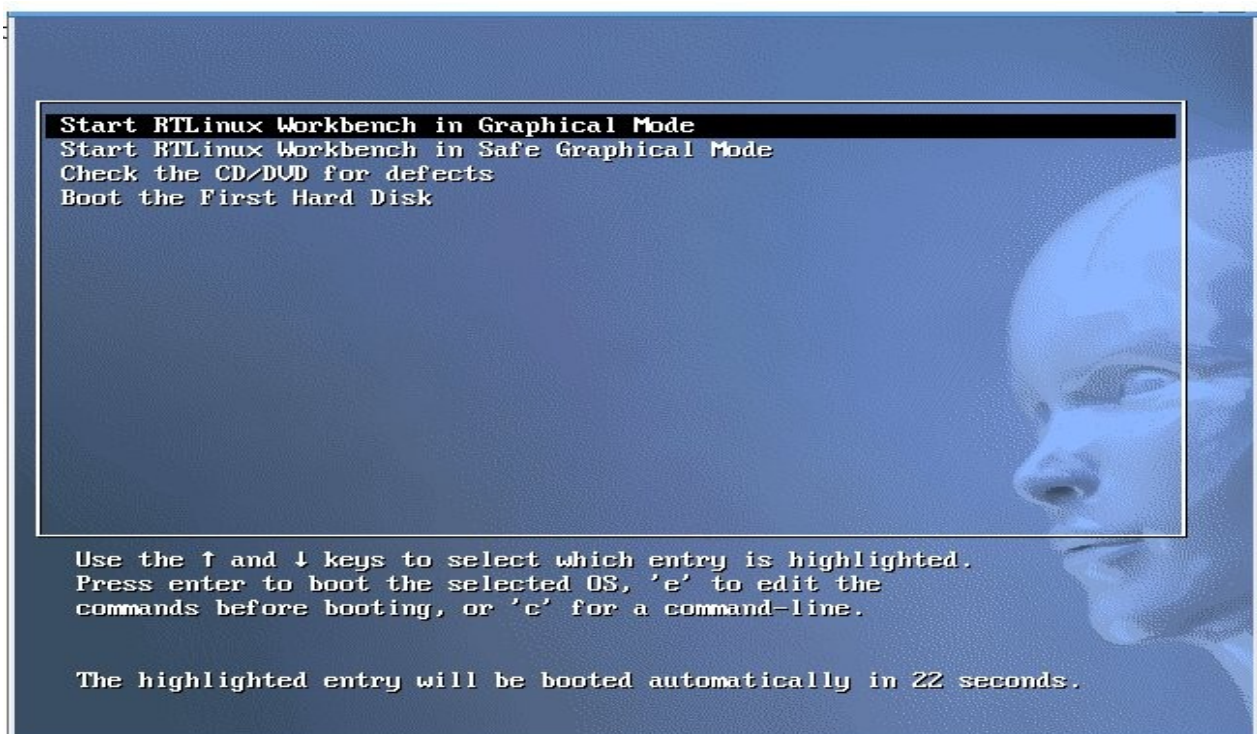
## How to : RTLinux Workbench 1.0 Live/Install DVD

### BIOS Setup

- Skip this step, if your PC is already booting from DVD Reader/Writer
- Boot your PC.
- Press **Del** key or **F1** to enter BIOS setup.
- Go to **Boot sequence** and select first priority to your DVD Reader/Writer
- Press **F10** to save and exit
- Reset your PC

### Boot your RTLinux Workbench 1.0

- Now your PC will boot it from RTLinux Workbench Live DVD 1.0
- The following screen will be appear. Select **Start RTLinux Workbench in Graphical Mode**, if you have 512MB RAM or higher.
- If you have less than 512MB RAM, select **Start RTLinux Workbench in Safe Graphical Mode**
- Need to check your RTLinux Workbench Live DVD, select **Check the CD/DVD for defects**
- To boot your PC with existing Operating System, select **Boot the first Hard disk**



## Booting RTLinux Workbench

- After you selected to boot RTLinux Workbench 1.0, the following screen will be appear.

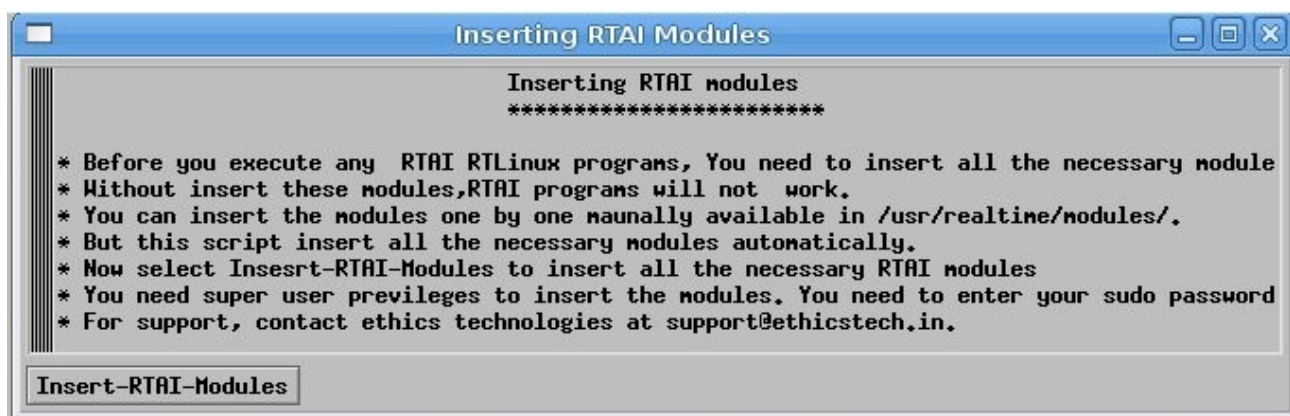


## Login

- Login with user name : **rtlinux** and Password : **rtlinux**
- You can also *Reboot, Hibernate, Standby, Switch user, Shut down* your PC from the menu *Option*

## Insert the RTLinux Modules

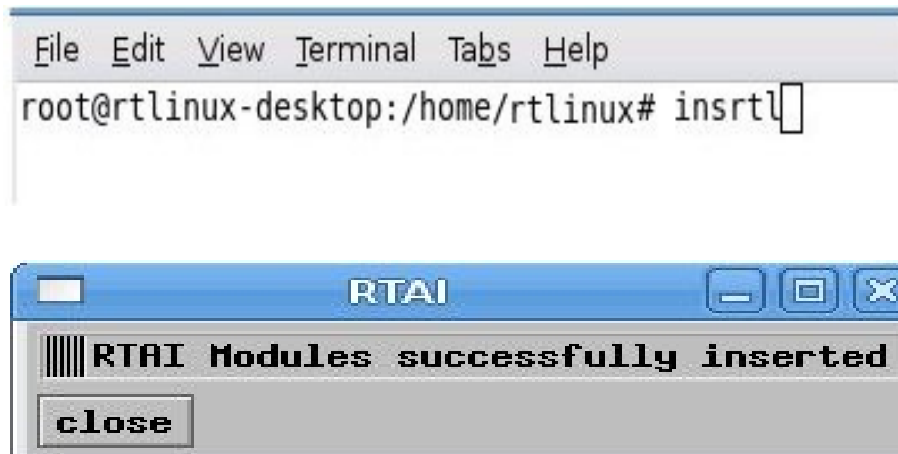
- Before you execute your rtlinux programs, its very important to insert the rtlinux modules.
- Without inserting rtlinux modules, you can compile your rtlinux programs. But it will not execute. You will get *Unknown symbol error*.
- You can insert all the necessary rtlinux modules automatically in a single click. Ethics Technologies provided the scripts to insert and remove all the modules automatically.
- Go to main menu *Applications-->RTAI-->RTAI-Examples-->Insert RTAI modules*
- Now click *Insert RTAI modules*. A window will appear with necessary instruction to insert the rtlinux modules. Please read the instruction carefully and follow it.



## Getting started with RTLinux Workbench 1.0 Live/Install DVD

---

- Now click ***Insert-RTAI-Modules***. A terminal window will appear. Now type ***insrtl***.
- You will get a window which confirms you the rlinux modules loaded successfully.



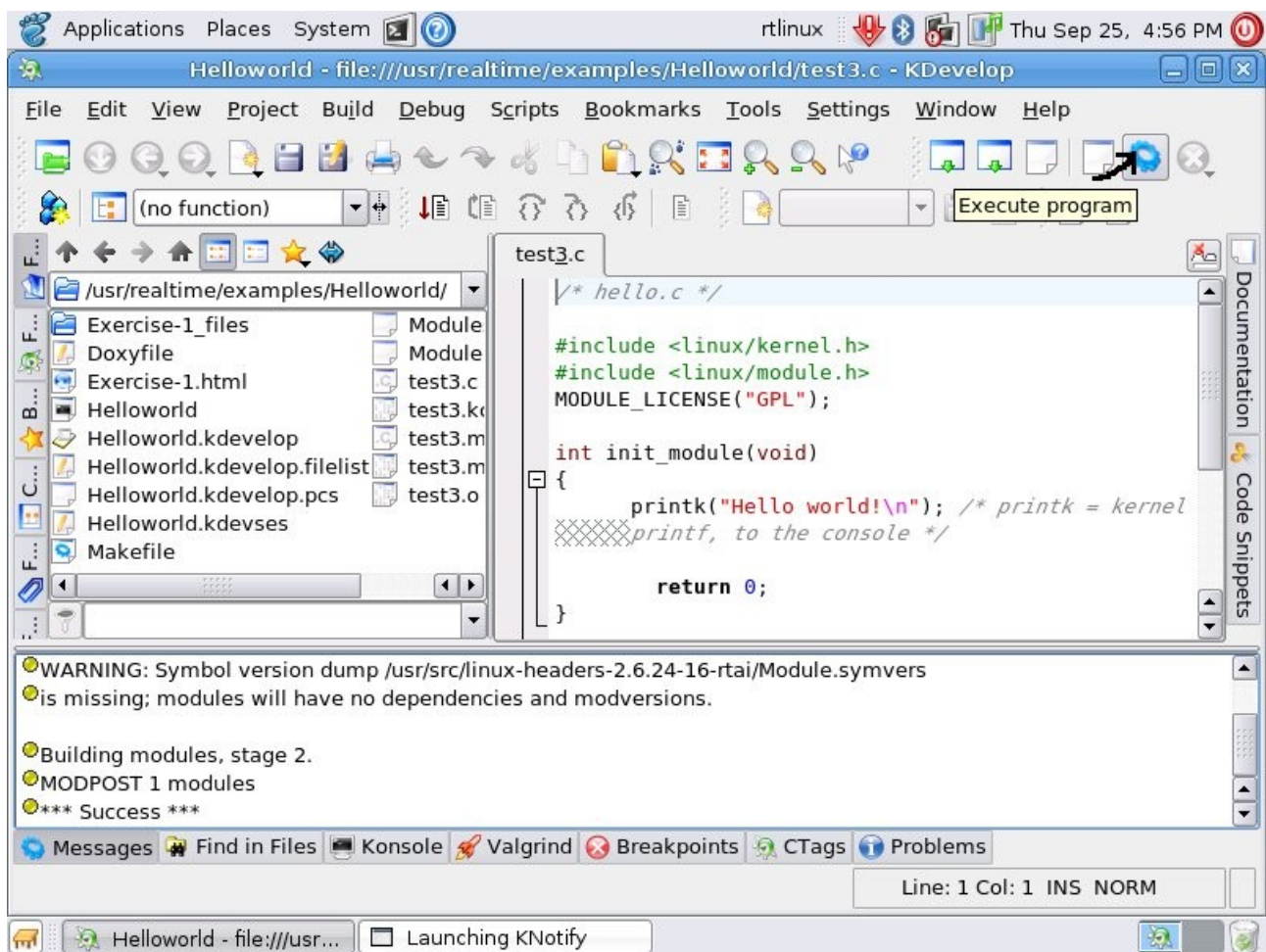
### Execute your first Hello World program!

- Go to main menu ***Applications-->RTAI-->RTAI-Examples-->Hello world-->execute***
- A window will appear to wait for your ***sudo*** password. Type ***rtlinux*** and press ***Ok***
- Now the ***Kdevelop IDE*** will be started to edit your rlinux programs

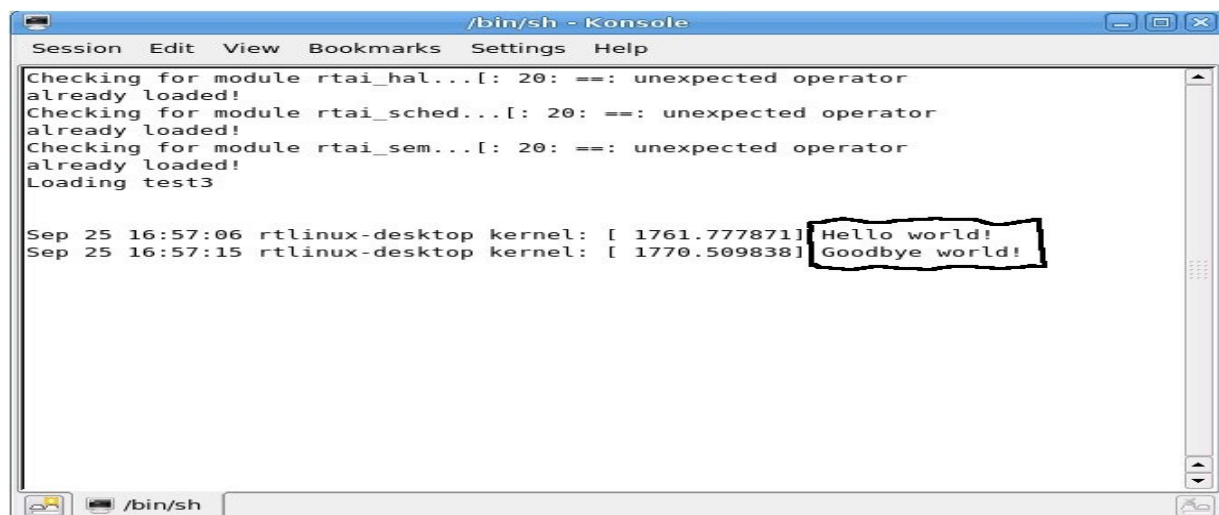


- All the example programs already compiled and come-up with object files. You no need to compile it again. But you should compile it, suppose if you have done any modification in the example source code.
- Click Execute icon indicated by aero mark to execute the program.

# Getting started with RTLinux Workbench 1.0 Live/Install DVD



- You will get the output window after you clicked the execute icon.
- The output ***Hello World!*** will be showed in the output window. After 10 seconds, the task will be restarted and the output ***Goodbye world!*** will be showed.



You are now familiar with ethics Technologies RTLinux Workbench 1.0. You can practice other examples with the same above mentioned steps. RTLinux Workbench also contains others tools such like Scilab, EMC, RTAI-XML, RTServo, and others. If you have any queries, send to our community forum, <http://forum.electonica.org.in>

For buying this product, contact [sales@ethicstech.in](mailto:sales@ethicstech.in)